

## STAPHYLINIDAE FROM THE SOCIETY ISLANDS \*

By

MALCOLM CAMERON

### INTRODUCTION

Eleven species of Staphylinidae are here recorded from the Society Islands; no less than ten genera are represented, of which one is undescribed. Two of the species are new, and a third is among those recently described in a report on a collection from the Marquesas Islands.<sup>1</sup> As in the Marquesan collection, all of the specimens were taken by the Pacific Entomological Survey.

### SUBFAMILY OXYTELINAE

#### Tribe OXYTELINI

#### **Trogophloeus mumfordi** Cameron.

Tahiti: Papenoo Valley, altitude about 500 feet, 6 miles from sea, October 23, 1928, 1 specimen, A. M. Adamson.

Collected also in the Marquesas Islands, from which the species was described.<sup>1</sup>

### SUBFAMILY EUAESTHETINAE

#### Tribe EUAESTHETINI

#### New genus, near **Edaphus**.

Tahiti: Papenoo Valley, altitude 650 feet, October 29, 1928, unique.

### SUBFAMILY PAEDERINAE

#### Tribe PAEDERINI

#### **Medon pacifica**, new species (fig. 1).

Moderately shining, rufo-ferruginous, the clytra except the extreme base and the posterior third, blackish. Antennae and legs reddish-yellow. Length, 4 mm.

In size and build resembling *adamsoni*<sup>1</sup> but differs in the color and longer antennae. The head is coriaceous as in *adamsoni* but the punctures are less superficial, the thorax has a fine granular sculpture, less close than in *adamsoni*, and the elytra are more finely punctured.

<sup>1</sup> Cameron, M., The Staphylinidae of the Marquesas Islands: B. P. Bishop Mus., Bull. 114, 1933.

\* Pacific Entomological Survey Publication 6, article 15. Issued August 15, 1933.

Tahiti: Hitiaa, altitude 1500 feet, 3 miles from sea, November 20, 1928, in dead *Pandanus* stem, type, A. M. Adamson.

Moorea: Faaroa Valley, altitude 1000 feet, December 4, 1928, paratype, Adamson.

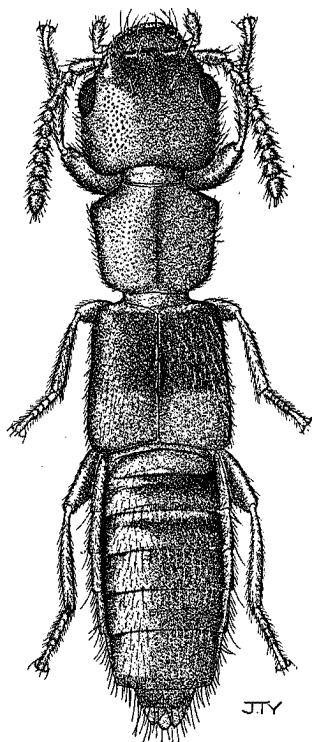


FIGURE 1.—*Medon pacifica*, new species.

**Scopaeus limbatus** Kraatz.

Tahiti: Papeete, September 9, 1928, at light, 1 specimen, A. M. Adamson.  
Also in Ceylon, India, Malay Peninsula, Sumatra.

SUBFAMILY STAPHYLININAE

Tribe STAPHYLININI

**Philonthus longicornis** Stephens.

Tahiti: Fautaua Valley, altitude 1500 feet, September 11, 1928, 10 specimens, A. M. Adamson.

Cosmopolitan species.

**Creophilus erythrocephalus** Fabricius.

Tahiti: Fautaua Valley, altitude 1500 feet, September 11, 1928, 1 specimen, A. M. Adamson.

Also in Australia, Tasmania, and Chile.

## Tribe QUEDIINI

**Ctenandropus nigriceps** Cameron.

Tahiti: Hitiaa, altitude 1500 feet, 3 miles from sea, November 20, 1928, 1 specimen in dead stem *Pandanus* species, A. M. Adamson.

Also in India, Andamans, Malay Peninsula, Sumatra, and the Philippines.

## SUBFAMILY ALEOCHARINAE

## Tribe MYRMEDONIINI

**Gnypeta variegata** Bernhauer.

Tahiti: Faa, altitude about 1000 feet, 4 miles from sea, November 7, 1928, in dead leaves on ground, 5 specimens; Hitiaa, altitude 1500 feet, 3 miles from sea, November 20, 1928, on *Freycinetia* species, 3 specimens; A. M. Adamson.

Also in Samoa, Fiji, and the Marquesas Islands.

Probably the *Bolitochara insulana* of Fairmaire, originally described from Tahiti, and subsequently placed in the genus *Tachyusa*.

**Atheta bicincta** Cameron.

Tahiti: Hitiaa, altitude 1500 feet (2 specimens labeled 3 miles from sea), November 20, 1928, 18 specimens (3 on *Freycinetia* species); Papenoo Valley, altitude about 1000 feet, 6 miles from sea, November 26, 1928, 2 specimens from female inflorescence of *Freycinetia* species; A. M. Adamson.

Also in Fiji and the Marquesas Islands.

**Atheta peregrina** Kraatz.

Tahiti: Fautaua Valley, September 11, 1928, altitude 1500 feet, 1 specimen; Papenoo Valley, altitude about 500 feet, 6 miles from sea, October 23, 1928, 3 specimens, altitude 350 feet, 7 miles from sea, October 25, 1928, 2 specimens; A. M. Adamson.

Also in Ceylon and India.

**Thamiaraea insigniventris** Fauvel.

*Atheta miriventris* Cameron.

Tahiti: Vallée de la Reine, altitude 460 feet, 3 miles from sea, December 17, 1928, 1 specimen, Mumford and Adamson.

Also in Ceylon, Singapore, Sumatra, Philippines, Celebes and New Guinea.