

## ANTHRIBIDAE FROM THE MARQUESAS ISLANDS\*

By

KARL JORDAN

ZOOLOGICAL MUSEUM, TRING

The collection of Anthribidae made in the Marquesas Islands by the Pacific Entomological Survey and submitted to me for study contains six species: a new genus *Aethessa*, represented by two species, and a new subspecies of *Phloeobius gigas*, which are described below; the widely distributed *Araecerus vieillardii* and *Mauia subnotatus*; and *Proscopus veitchi*, previously known only from Samoa and Fiji. Of the 165 specimens submitted to me, no less than 150 belong to one species, *Araecerus vieillardii*, which presumably occurs on all of the islands visited by the Survey and perhaps also on all the Pacific islands with the exception of New Zealand.

### Distribution

	ENDEMIC	OTHER PACIFIC ISLANDS	INDIAN OCEAN
1. <i>Phloeobius gigas</i> .....	---	---	×
2. <i>Proscopus veitchi</i> .....	---	×	---
3. <i>Mauia subnotatus</i> .....	---	×	×
4. <i>Aethessa mumfordi</i> .....	×	---	---
5. <i>Aethessa adamsoni</i> .....	×	---	---
6. <i>Araecerus vieillardii</i> .....	---	×	---

Species 2, 4, and 5 are presumably restricted to the Pacific islands; species 6 is essentially Pacific, but is also known from New Guinea and the Philippines; species 1 and 3 are distributed over a large portion of the Oriental region, their ranges extending to Madagascar and the Mascarene Islands. All the anthribids collected in the Marquesas are of an Indo-Pacific type.

With the above collection, specimens representing four species were submitted to me from the Society Islands; my report on these is being published by Bernice P. Bishop Museum. Two of the four species, *Mauia subnotatus* and *Araecerus vieillardii*, were included in both collections.

### ***Phloeobius gigas horaeus*, new subspecies.**

Almost indistinguishable from *P. gigas cervinus* Klug 1833, from Madagascar and the Mascarenes; elytra more diffusely grey, less spotted, the cinnamon lines occupying interspaces II, IV, VI, and so forth, narrower and inconspicuous, apical area more uniformly grey, segment II of all tarsi for the greater part black.

\* Pacific Entomological Survey Publication 7, article 2. Issued March 17, 1933.

Tahuata: Hanahevane, seashore, July 16, 1930, on *Thespesia populnea*; Hanamenino, altitude 30 feet, July 17, 1930, 2 males, 1 female, type male; LeBronnec and H. Tauraa.

Hivaoa: Atuona, May 27, 1929, 1 female, Mumford and Adamson.

In the Papuan and Malaysian *P. gigas gigas* Fabricius 1775, the white spots and cinnamon stripes of the elytra are much more conspicuous.

**Proscopus veitchi** Jordan.

*Proscopus veitchi* Jordan, Nov. Zool., vol. 31, p. 256, 1924 (Fiji); Insects of Samoa, pt. 4, fasc. 2, p. 164, text-figs. 2, 3, 1928 (Samoa).

Nukuhiva: Teuanui, Tovii [Toovii], October 25, 1929, 2 males, 1 female, Mumford and Adamson.

Hivaoa: Atuona Valley, February 25, 1929, 1 female (2.7 mm.), Mumford and Adamson.

Fatuhiva: Tapuhiva, Hanavave, altitude 500 feet, August 23, 1930, and September 9, 1930, on *Elephantopus mollis*; Otomahe, Omoa [Oomoa] Valley, August 20, 1930, 1 male, 2 females, LeBronnec.

The 2 males from Teuanui are larger than the one from Fatuhiva, with the antenna three times as long as the body and segment IX twice as long as I, being as long as X and XI. Size of brown markings variable, often confluent along suture and along outer margin. Described from Fiji and also recorded from Samoa.

**Mauia subnotatus** (Boheman).

*Araecerus subnotatus* Boheman: Eugenie's Resa, p. 116, 1859 (Keeling).

*Mauia satelles* Blackburn: Roy. Soc. Dublin, Trans., vol. 3, p. 195, 1885 (Maui).

*Contexta murina* Jordan: Deutsche Ent. Zeitschr., p. 78, 1902 (Ceylon).

Eiao: altitude 1500 feet, April 23, 1931, 1 female on dead wood of *Pisonia* species, LeBronnec and H. Tauraa.

Widely distributed in the tropics of the Old World.

Genus **AETHESSA**, new genus

Near *Misthosimella* Jordan 1914 and *Misthosima* Pascoe 1859; differs from both in the eye being longer than broad, farther away from the base of the antenna, the anterior edge of the antennal groove at the extreme base of segment I elevated as a tubercle, and the rostrum very short in front of this tubercle, much shorter than segment I of the antenna is broad.

Eye entire. Mandible with large subapical tooth; labiophore not separated from gula by a transverse depression. Antenna thicker than in the allied genera, reaching (in male) at least beyond the base of the elytra,

III much longer than II, club broadish, symmetrical, beneath flattened and hairy, IX and X triangular, about as long as broad, or IX a little longer, XI elliptical. Pronotal carina subbasal, angle obtuse, lateral carina not reaching middle, lateral longitudinal carinula oblique, forming with dorsal carina inwardly an obtuse angle, outwardly a very acute one. Base of elytra somewhat incurved from shoulder to shoulder. Legs long. Genotype, *Aethessa mumfordi*, new species.

*Aethessa mumfordi*, new species (fig. 1).

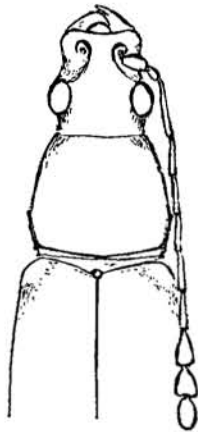


FIGURE 1.—*Aethessa mumfordi*, new species,  $\times 15$ .

Male

Rufescent brown, antenna and legs paler, pubescence clayish grey, variegated with brown on the elytra. Nearly two and one-half times as long as broad (head excluded). Antennal groove large, much encroaching on the upper surface of the rostrum, the interspace at the narrowest point about one-third the width of the frons. Pubescence of head sparse, except at eyes, and in the near middle of occiput. Middle half of apical margin of rostrum very feebly incurved, rostrum in front of antennal groove equalling in length the width of the tuberculiform base of antennal segment I. Antenna reaching beyond middle of elytra, segment I much thicker and much longer than II, which is short, III longest of all, one-half longer than IV, IV to IX about equal in length, X and XI shorter, X a little shorter and broader than IX and triangular, a little longer than broad, XI elliptical, all segments more or less hairy, IX to XI somewhat woolly beneath.

Pronotum one-fifth broader than long, dorsally depressed, median line somewhat raised, pubescence at each side of this slight ridge directed forward-inward, which enhances the elevation of the ridge; densely reticulate, the meshes very distinct, but their centers not deep, the posterior ridge of each mesh somewhat higher than the anterior ridge, giving the surface the appearance of being granulate-reticulate; dorsal carina feebly concave, very slightly convex at sides, lateral angle obtuse, rounded off.

Elytra nearly twice as long as broad (23:41), flattened above in posterior two-thirds, punctate-striate, variegated with brown, whitish grey and luteous grey, the white pubescence forming diffuse rounded spots in posterior half, subbasal swelling very dis-

tinct, in the depression behind it a large diffuse whitish grey patch. Pygidium rounded-triangular, broader than long.

Pubescence of underside whitish grey, dispersed, somewhat condensed on mesepisternum and at apices of metepisternum and metepimeron, punctures on sterna deep, on abdomen shallow and smaller, except some at bases of segments, sides of abdomen almost smooth apart from the granules bearing the pubescence. Legs pale rufous, middle of femora, of tibiae and of tarsal segment I darker, foretibia nearly as long as the pronotum is broad, longer than femur, foretarsal I more than one-half the length of the tibia (4:7), in all tarsi I longer than II to IV together.

Length (head excluded), 3.5 mm.; width, 1.4 mm.

Nukuhiva: Puokoke, Tunoa Ridge, October 22, 1929, one male on shrub F. no. 564, Mumford and Adamson.

**Aethessa adamsoni**, new species (fig. 2).

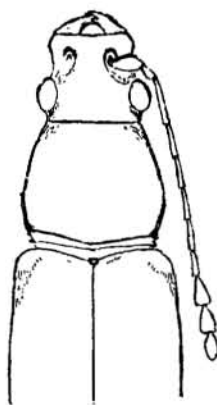


FIGURE 2.—*Aethessa adamsoni*, new species,  $\times 15$ .

Shorter than the previous species, with shorter antenna and denser pubescence. Rufescent brown, pubescent luteous grey, the brown derm showing through in places, especially on the elytra, which are variegated with brown and grey.

Interspace between the antennal grooves somewhat wider than in the previous species. Antenna not reaching to middle of elytra, hairy, segment III one-third longer than IV, IV to VI about equal in length, the following shorter, club a little narrower than in the preceding species. Pronotum a little less distinctly depressed, pubescence concentrated in middle and towards sides, almost forming three stripes; lateral carina shorter and more slanting than in *A. mumfordi*, the angle being larger.

Elytra less elongate (23:38 instead of 23:41), subbasal swelling less prominent. Pygidium more rounded, densely grey.

Foretarsal segment I less than half the length of the foretibia, segments III and IV of all tarsi deep brown like the tips of segments I and II and of tibiae.

Length, 3.3 mm.; width, 1.4 mm.

Hatutu [Hatutaa]: middle of east side, September 30, 1929, 1 male. Adamson.

**Araecerus vieillardii** (Montrouzier).

*Urodon vieillardii* Montrouzier, Ent. Soc. France, Ann., p. 873, 1860  
(New Caledonia).

Club of antenna symmetrical, mesocoxa of male with prominent conical tooth, tibiae spotted with brown, foretibia of male with strong apical tooth and smaller teeth along inner surface, the teeth varying in size according to the size of the specimens, the teeth being vestigial in small males. A Pacific species which has extended its range westward to the Philippines.

Hivaoa: Mount Temetiu, northeast slope on trail, altitude 2000 feet, May 27 and 29, 1929, 3 males on decaying fruit of *Freycinetia* species; Kopaaftaa, altitude 2770 feet, August 2, 1929, 1 male, 1 female, on *Freycinetia* species; Vaiepoepo, altitude 2300 feet, June 2 and 3, 1929, 2 males; Teava Uhia i te Kohu, altitude 2100 feet, February 15, 1930, 2 males, 2 females, sweeping over *Paspalum conjugatum*; Mumford and Adamson.

Tahuata: Vaitahu Valley, altitude 90 feet, June 2, 1930, 15 males, 16 females, 120 feet, June 16, 1930, 29 males, 13 females, on *Gossypium* species; Hanamenino Valley, sea level, July 7, 1930, 1 male; Faanui, altitude 1500 feet, June 12, 1930, 1 male; Hanahevane Valley, altitude 150 feet, July 7, 1930, 1 male, 3 females; Tehue Valley, altitude 80 feet, May 27, 1930, 1 male, 3 females, sweeping over grasses; LeBronnec and H. Tauraa.

Fatuhiwa: Vaikoao, Omoa [Oomoa] Valley, altitude 1600 feet, August 29, 1930, 1 male, beating on *Metrosideros collina*, LeBronnec.

Mohotani: above Anaoa, altitude 325 feet, August 13, 1929, 4 males and 4 females, on *Eugenia rariflora*, Adamson; altitude 1400 feet, February 1, 1931, 1 male, LeBronnec and H. Tauraa.

Fatuuku: altitude 860 feet, November 19, 1930, 3 males, 1 female, H. Tauraa.

Uahuka: Putatauuu, Vaipae Valley, altitude 880 feet, September 20, 1929, 1 male; crest of north ridge, altitude 2000 feet, September 29, 1929, 1 male, miscellaneous sweeping, Adamson.

Uapou: Hakahetau Valley, altitude 1000 to 1200 feet, January 22, 1930, 2 males, sweeping, Whitten.

Eiao: near center, altitude 1665 feet, September 28, 1929, 5 males, 8 females, on *Hibiscus tiliaceus*; altitude 1450 feet, October 1, 1929, 4 males, 3 females, miscellaneous sweeping in coconut plantation; above Vaituha, altitude 800 feet, September 29, 1929, 1 male, Adamson. Altitude 1700 feet, April 23, 1931, 2 males, 6 females, on *Canthium odoratum*, LeBronnec and H. Tauraa.

Hatutu [Hatutaa]: middle of east side, altitude 1080 feet, September 30, 1929, 3 males, 3 females, Adamson; altitude 1500 feet, April 28, 1931, 1 male, 2 females, beating on *Canthium barbatum*, LeBronnec and H. Tauraa.