

INSECTS OF MICRONESIA

Diptera: Sarcophagidae, Supplement

By H. DE SOUZA LOPES

INSTITUTO OSWALDO CRUZ, RIO DE JANEIRO

This supplement to my paper on the Sarcophagidae of Micronesia (1958) includes additional records of geographical distribution and a description of the female of *Goniophyto boninensis*, not represented in the original material.

Goniophyto boninensis Souza Lopes (fig. 1).

Goniophyto boninensis Souza Lopes, 1958, B. P. Bishop Mus., Ins. Micronesia, Bull. 13 (2): 19, fig. 1.

Female: Length 6 to 9 mm. Differ from male as follows: Front about 0.35 times width of head. Ocellar bristles a little more developed than in male. Two strong and two small fronto-orbital bristles. Parafacialia about 0.2 times distance between vibrissae. Abdominal sternites 3 to 5 only apically exposed, with sparse black hairs. Genital segments black. Tergites 6 plus 7 with marginal bristles; tergites 8 and 9 represented

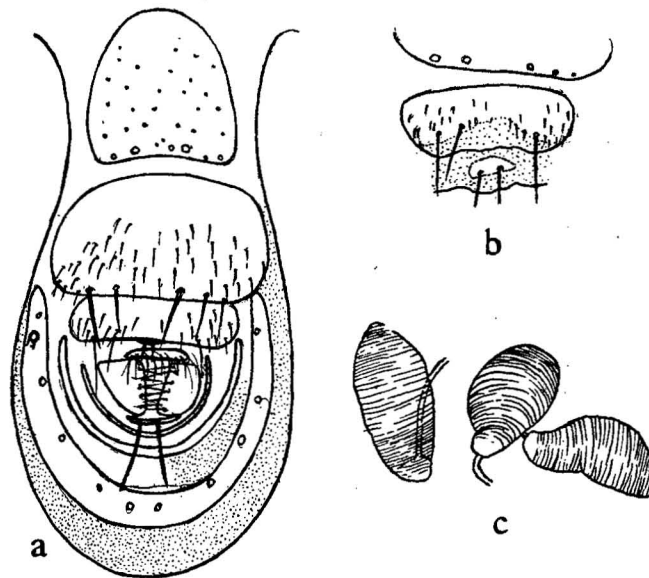


FIGURE 1.—*Goniophyto boninensis*: a, female genitalia; b, last genital sternites; c, spermathecae.

by crescent-shaped plates. Sternites 6 plus 7 large, with marginal bristles; sternite 8 with some hairs, without pigment on posterior margin; sternite 9 represented by a small pigmented plate bearing a pair of strong hairs. These features of genital sternites very similar to those of *Goniophyto bryani* Souza Lopes, 1938, from Hawaii. Anal tergite with a pair of long hairs. Spermathecae finely striated. Costal spine very strong, as in male.

Allotype female, two males and 42 females, Okimura, Haha Jima, Bonin Is., April 26 to June 9, 1958, Snyder. One male and 10 females in the collection of the Instituto Oswaldo Cruz.

Phytosarcophaga gressitti (Hall and Bohart).

S. MARIANA IS. GUAM: Female, Oct. 1957, Krauss.
 BONIN IS. CHICHI JIMA: Three females, Apr. 1958, Snyder.
 MARSHALL IS. KWAJALEIN: Feb. 1958, Krauss.
 GILBERT IS. TARAWA: Nov. 1957, Krauss.

Boettcherisca peregrina (Robineau-Desvoidy).

BONIN IS. CHICHI JIMA: 11 males, female, Omura, Apr. 1958, Snyder; two males, Okumura, May 1958, Snyder; six males, Miyanoama, Apr. 1958, Snyder; male, Sakai-ura, Apr. 1958, Snyder; male, Yoake Yama, Apr. 1958, Snyder; female, Ogiura, May 1959, Snyder.
 GILBERT IS. TARAWA: Male, female, Betio, Nov. 1957, Krauss; two males, Bairiki, Nov. 1957, Krauss.
 OCEAN IS. BANABA: Female, Dec. 1957, Krauss.

Boettcherisca karnyi (Hardy).

S. MARIANA IS. GUAM: Male, Krauss.

Parasarcophaga (s. str.) knabi (Parker).

S. MARIANA IS. GUAM: Oct. 1957, Krauss.

Parasarcophaga (s. str.) orchidea (Boettcher).

OCEAN I. BANABA: Two females, Dec. 1957, Krauss.

Parasarcophaga (Liosarcophaga) misera (Walker).

BONIN IS. CHICHI JIMA: 86 males, 107 females, Snyder; Haha Jima, 34 males, 28 females, Snyder.
 S. MARIANA IS. GUAM: Two males, Krauss.
 MARSHALL IS. KWAJALEIN: Two males, Krauss.
 GILBERT IS. TARAWA: Eight males, six females, Krauss.
 OCEAN I. BANABA: Male, Krauss.