

INSECTS OF MICRONESIA

Coleoptera: Malachiidae, Supplement

By **W. WITTMER**

HERRLIBERG-ZÜRICH

This supplement to my paper on the Malachiidae of Micronesia (1958) includes descriptions and geographical records of two new species.

Genus *Laius* Guérin-Méneville

4. *Laius palauensis* Wittmer, n. sp. (fig. 1, a).

Male: Black, first three antennal segments (including segment 2 which is partly visible or completely hidden) reddish yellow, elytra each with an oblong, transverse white patch, one before the middle, the other behind the middle, neither reaching the suture nor the outer margin; the apical patch is usually smaller than the anterior patch.

Head with eyes broader than prothorax, frons quite aplanate with a fine longitudinal line in the middle, beginning under prothorax and extending over half of head, genae quite broad, eyes separated from vertex and frons by a carina, which is smoother than rest of head, upper surface of head finely microsculptured, slightly opaque. Antennae robust, segment 1 about as long as 3, strongly broadened toward apex, almost triangular, 2 hidden, 3 almost as broad as long, at base strongly produced outwardly and emarginate, both sides slightly elevated, upper surface rather aplanate and smooth, 4 a little shorter than the following segments. Prothorax broader than long, on each side a short median tooth at about the middle, from tooth to base constricted, transversely depressed before base, anterior portion convex, upper surface finely microsculptured, slightly opaque. Elytra somewhat dilated toward apex, quite densely punctured, opaque.

Female: Usually antennal segment 3 is black and only 1 slightly testaceous, 3 almost cylindrical, rather longer than 1 and somewhat broader. The carina along the upper part of the eyes is missing.

Length: 2.5 mm.

Holotype (US 69423), allotype, and paratypes, Palau, Babelthuap, Dec. 9-20, 1947, Dybas. Additional specimens: Ngaiangl Atoll, May 9, 1957, Sabrosky, Urukthapel, Ngeremdin, 180 m., Dec. 5, 1952, Gressitt; Koror, Mar. 15-25, 1948, Maehler; Aug. 10, 1953, Beardsley; Kayangel Atoll, Ngajangel, Dec. 15, 1952, Gressitt; Fais Atoll, Apr. 28, 1954, Beardsley.

DISTRIBUTION: Caroline I. (Palau, Caroline Atolls).

5. *Laius yapensis* Wittmer, n. sp. (fig. 1, b).

Male: Black, head between bases of antennae and mouth parts very often of a lighter color, antennae yellow with the last segments somewhat darkened, femora toward apices, tibiae, and tarsi often yellow or a little darkened, elytra each with a white patch, one before the middle,

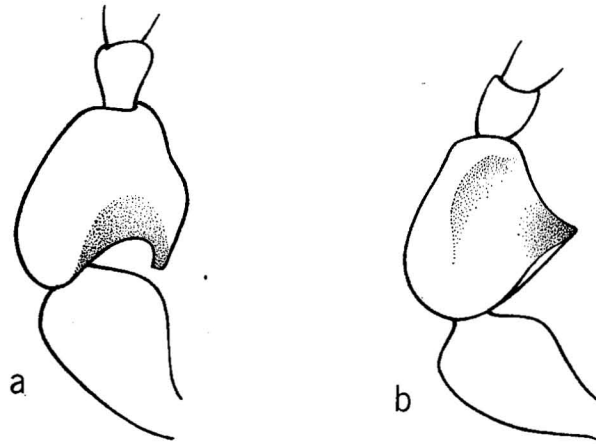


FIGURE 1.—Basal segments of antenna, **a**, *Lais palauensis*; **b**, *L. yapensis*.

almost rectangular, the other larger and broader, behind the middle, both patches isolated from the suture and outer margin.

Head with eyes broader than prothorax, frons quite aplanate, with a fine longitudinal line in the middle, beginning under prothorax and extending to about center of head, genae very broad, upper part of eyes not separated from vertex and frons by a carina, surface finely micro-sculptured, slightly opaque. Antennae robust, segment 1 about as long as 3, quite strongly dilated toward apex, 2 hidden, 3 longer than broad, basal border margined, this margin becoming more pronounced outwardly and ending in a more or less pronounced tooth, depending from which aspect one is looking, upper surface only slightly impressed, 4 to 6 of about equal length, somewhat shorter than the following segments. Prothorax broader than long, on each side a short tooth at about middle, from tooth to base constricted, transversely depressed before base, anterior portion convex, surface finely microsculptured and slightly opaque as on head. Elytra somewhat dilated toward apex, surface punctate. Front femora slightly emarginate on inner side toward apex.

Female: Same coloring as in male, antennal segment 1 only slightly broader than 3, both of about the same length.

Length 2.5 mm.

Holotype (US 69506), allotype, and paratypes, Yap Is., S. Yap I., July-Aug. 1950, Goss; Ruul Distr., S. Rumung I., July-Aug. 1950, Goss.

DISTRIBUTION: Caroline Is. (Yap).

This species is closely related to *L. palauensis*, but can be easily recognized by its less darkly colored antennae and legs. Except for the first three antennal segments which are colored as in *palauensis*, the other segments are always yellow. Also the shape of the basal segments is different in the two species, but the distinction is clearer in the shape of the head. The upper part of the eyes is not separated from the vertex and frons by a carina in *yapensis*, whereas in *palauensis* such a carina is easily apparent.