

## INSECTS OF CAMPBELL ISLAND. PHTHIRAPTERA

By Theresa Clay

BRITISH MUSEUM (NAT. HIST.), LONDON

*Abstract*: Over 25 species of biting lice (1 on sheep; rest from sea birds) and 2 species of sucking lice (from rat and sea lion), were taken on Campbell I.

### MALLOPHAGA

#### Family MENOPONIDAE

##### *Austromenopon affine* (Piaget), 1890

Type host: *Diomedea exulans* Linn.

CAMPBELL I.: ♂♂ and ♀♀ from *Diomedea e. epomophora*.

##### *Austromenopon ossifragae* Eichler, 1949

Type host: *Macronectes giganteus* (Gmelin).

CAMPBELL I.: ♂♂ and ♀♀ from the type host.

##### *Austromenopon elliotti* Timmermann, 1954

Type host: *Pelecanoides urinatrix* (Gmelin).

CAMPBELL I.: ♀♀ from *Pelecanoides urinatrix exsul* are almost certainly this species, though ♂♂ are needed to confirm the identification.

#### Family PHILOPTERIDAE

##### *Austrogoniodes concii* (Kéler, 1952)

Type host: *Eudyptes crestatus* (J. F. Miller).

CAMPBELL I.: ♂♂ and ♀♀ from *Eudyptes pachyrhynchus sclateri* belong to this species. It has previously been taken from this host on the Antipodes Is. and New Zealand (collection of the Canterbury Museum, Christchurch, New Zealand).

##### *Austrogoniodes cristati* Kéler, 1952

Type host: *Eudyptes crestatus* (J. F. Miller).

CAMPBELL I.: ♂♂ and ♀♀ taken from rockhopper penguin's nest. This species has been taken in addition to the type host from a number of penguins, namely: *Eudyptes chrysolophus*, *E. chrysocome* (Macquarie I.; collection of A.N.A.R.E.) and *E. pachyrhynchus sclateri* (New Zealand; Canterbury Museum).

**Harrisoniella hopkinsi** Eichler, 1952

Type host: *Diomedea exulans* Linn.

CAMPBELL I.: ♂♂ and ♀♀ from *Diomedea e. epomophora*. Kéler 1957: 504 recorded this species from the same host.

**Harrisoniella grandis** (Piaget, 1880)

Type host: *Stercorarius* sp.

CAMPBELL I.: A ♀ nymph and ♀♀ from *Catharacta skua lombergi* are *H. grandis* which has previously been taken from this host species.

**Perineus** Harrison, 1936

There are 2 distinct groups of species included in this genus, which may have to be separated generically. They are listed here under *Perineus sens. str.* and *sens. lat.*

**Perineus sens. str.**

CAMPBELL I.: ♀♀ from *Diomedea e. epomophora* and *Diomedea chrysostoma* are not identifiable without ♂♂.

**Perineus sens. lat.****Perineus (s. l.) diomedae** (J. C. Fabricius, 1775)

Fig. 1.

Type host: *Diomedea melanophris* Temminck.

CAMPBELL I.: ♂♂ and ♀♀ from the type host and *Phoebetria palpebrata*; it is well known from both these host (see Clay, 1940: 302).

**Perineus (s. l.) obscurus** (Rudow, 1869)

Type host: *Macronectes giganteus* (Gmelin).

CAMPBELL I.: ♂♂ and ♀♀ from type host.

**Perineus (s. l.) sp.**

CAMPBELL I.: A ♀ from *Diomedea chrysostoma* is not identifiable without a ♂.

**Halipeurus** sp.

CAMPBELL I.: Nymphs from *Puffinus griseus* are not identifiable.

**Philoceanus garrodiae** (Clay, 1940)

Type host: *Garrodia nereis* (Gould).

CAMPBELL I.: ♂♂ and ♀♀ from the type host,

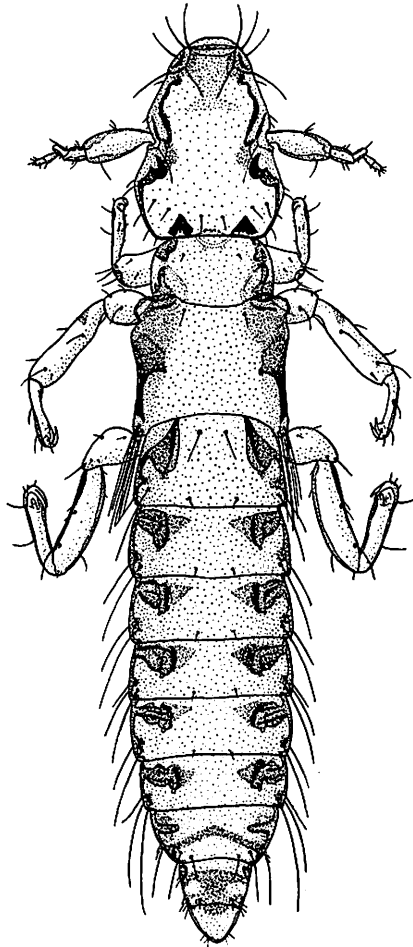


Fig. 1. *Perineus diomedae*, dorsal view of ♂.

**Pelmatocerandra setosa** (Giebel, 1876)

Type host: *Pelecanoides urinatrix exsul* Salvin.

CAMPBELL I.: ♂♂ and ♀♀ from the type host.

**Trabeculus hexacon** (Waterston, 1914)

Type host: *Procellaria aequinoctialis* Linn.

CAMPBELL I.: ♂♂ and ♀♀ from *Puffinus griseus* are included under this species as *sensu lato*. This term denotes that these specimens from the population parasitic on *Puffinus griseus*, belong to the species *T. hexacon*, but differ somewhat (in measurements) and do not warrant nomenclatorial recognition (see also Clay, 1962: 200).

**Docophoroides brevis** (Dufour, 1835)

Type host: *Diomedea exulans* Linn.

CAMPBELL I.: ♂♂ and ♀♀ from *Diomedea epomophora*. A nymph from the type host probably also belongs to this species.

**Docophoroides murphyi** (Kellogg, 1914)

Type host: *Macronectes giganteus* (Gmelin).

CAMPBELL I.: ♂♂ and ♀♀ from the type host.

**Pectinopygus**

Identification of material in this genus must be postponed.

**Saemundssonina stresemanni** Timmermann, 1949

Type host: *Catharacta s. skua* Brünnich.

CAMPBELL I.: ♂♂ and ♀♀ from *Catharacta skua lonnbergi* belong to this species.

**Saemundssonina lari** (O. Fabricius, 1780)

Type host: *Larus hyperboreus* Gunnerus.

CAMPBELL I.: ♂♂ and ♀♀ from *Larus dominicanus* and *Larus novaehollandiae scopulinus* are included under this species as *sens. lat.* See under *Trabeculus* for discussion of this term.

**Saemundssonina** sp.

CAMPBELL I.: ♀♀ from *Sterna vittata bethunei* are not identifiable without ♂♂.

**Quadriceps fuscolaminulatus** (Enderlein, 1908)

Type host: *Larus dominicanus* Lichtenstein.

CAMPBELL I.: ♂♂ and ♀♀ from type host.

**Quadriceps lingulatus** (Waterston, 1914)

Type host: *Larus novaehollandiae hartlaubii* Bruch.

CAMPBELL I.: ♂♂ and ♀♀ from *Larus novaehollandiae scopulinus* belong to this species.

## Family TRICHODECTIDAE

**Damalinea ovis** (Schrank, 1781)Type host: *Ovis aries* Linn.

CAMPBELL I.: ♂♂ and ♀♀ from the type host.

## ANOPLURA

## Family HOPLOPLEURIIDAE

**Polyplax spinulosa** (Burmeister, 1839)Type host: *Rattus norvegicus* (Berkenhout).

CAMPBELL I.: ♂♂ and ♀♀ from rats.

## Family ECHINOPHTHIRIDAE

**Antarctophthirus microchir** (Trouessart & Neumann, 1888)Type host: *Otaria hookeri* Gray.

CAMPBELL I.: A ♂ and ♀ from the type host.

## HOST-PARASITE LIST

## Birds

## SPHENISCIFORMES

*Eudyptes pachyrhynchus sclateri**Eudyptes crestatus crestatus**Austrogoniodes concii* (Kéler, 1952).*Austrogoniodes cristati* Kéler, 1952.

## PROCELLARIIFORMES

*Diomedea e. epomophora**Diomedea melanophris impavida**Diomedea chrysostoma**Diomedea e. exulans**Phoebetria palpebrata**Macronectes giganteus**Puffinus griseus**Garrodia nereis**Pelecanoides urinatrix exsul**Austromenopon affine* (Piaget, 1890).*Harrisoniella hopkinsi* Eichler, 1952.*Perineus* (sens. lat.) sp.*Docophoroides brevis* (Dufour, 1835).*Perineus diomedae* (J. C. Fabricius, 1775).*Perineus* (sens. str.) sp.*Perineus* (sens. lat.) sp.*Docophoroides* sp.*Perineus diomedae* (J. C. Fabricius, 1775).*Austromenopon ossifragae* Eichler, 1949.*Docophoroides murphyi* (Kellogg, 1914).*Perineus obscurus* (Rudow, 1869).*Trabeculus hexacon* (Waterston, 1914) sens. lat.*Halipeurus* sp.*Philoceanus garrodiae* (Clay, 1940).*Austromenopon* probably *elliotti* Timmermann, 1954.*Pelmatocerandra setosa* (Giebel, 1876).

## PELECANIFORMES

*Phalacrocorax c. campbelli**Pectinopygus* sp.

## CHARADRIIFORMES

*Stercorarius skua lombergi**Saemundssonina stresemanni* Timmermann, 1949.*Larus dominicanus**Harrisoniella grandis* (Piaget, 1880).*Quadriceps fuscoluminatus* (Enderlein, 1908).*Larus novaehollandiae scopulinus**Saemundssonina lari* (O. Fabricius, 1780) *sens. lat.**Quadriceps lingulatus* (Waterston, 1914).*Saemundssonina lari* (O. Fabricius, 1780) *sens. lat.**Sterna vittata bethunei**Saemundssonina* sp. ♀♀ only.

## Mammals

Sheep

*Damalinia ovis* (Schrank, 1781).

Rats

*Polyplax spinulosa* (Burmeister, 1839).*Otaria hookeri**Antarctophthirus microchir* (Troessart & Neumann, 1888).

## REFERENCES

- Clay, T. 1940. Anoplura. Brit. Graham. Land Exped., 1934-37 1: 295-317.
- 1962. A key to the species of *Actornithophilus* Ferris with notes and descriptions of new species. Bull. Brit. Mus. (Nat. Hist.) Ent. 11: 189-244.
- Kéler, S. von. 1957. Die Mallophagen von Sturmvögeln und Ruderfüßern I. *Harrisoniella* Bedford und *Perineus* Thompson. Beitr. Ent. Berlin 7: 493-527.