

## INSECTS OF CAMPBELL ISLAND. HYMENOPTERA : DIAPRIIDAE

By Carl M. Yoshimoto

B. P. BISHOP MUSEUM, HONOLULU, HAWAII

*Abstract:* One species, *Antarctopria latigaster* Brues and a new subspecies, *A. latigaster campbellana* are known from Campbell I.

This study was made possible through the collection of Dr. J. L. Gressitt, Mr. K. A. J. Wise and Mr. K. P. Rennell of the Bishop Museum.

*Antarctopria latigaster* Brues      Fig. 1.

*Antarctopria latigaster* Brues, 1920, Austral. Ant. Exp. ser. C, 5 (8): 27-28.—Yoshimoto, 1962, Pacific Ins. 4 (4): 973-74.

SPECIMENS EXAMINED: 10 ♀♀, Monument Harbor, in indentation under surface of stone on beach, 9. II. 1963, Rennell, Wise; 10 ♀♀, Shoal Pt., 0-10 m, kelp on beach, 5. I. 1963; 9 ♀♀, Beeman Beach, 1-2 m, under rock, 29. XII. 1963; 1 ♀, Beeman Camp, 2-50 m, sweeping *Poa*, 12-17. XII. 1961, Gressitt; 1 ♀, Beeman Camp, 21. XII. 1962, Rennell, Reared 29. XII. 1962, Coelopid puparia; 5 ♀♀, Lookout Bay Beach, 2 m, 14. XII. 1962, Reared 26. XII. 1962, Coelopid puparia; 6 ♂♂, Lookout Bay Beach, 2 m, under rocks, 30. XII. 1961, 21. XII. 1962, Rennell; 6 ♂♂, Beeman Beach, 1-2 m, kelp on beach, 16. XII. 1962, 21. XII. 1962, Rennell; 2 ♂♂, Shoal Pt., kelp on beach, 7. II. 1963, Rennell; 1 ♂, Tucker Cove, 0-30 m, *Dracophyllum*, 7. VII. 1962, Rennell; 1 ♂, Middle Cove, NW Bay, under kelp and stones, 5. II. 1963; Wise; 1 ♂, Lookout Bay, Perseverance Harbor, in rotting kelp on beach, 3. II. 1963, Wise; 1 ♂, Smooth Water Bay, shore cliffs, 2. II. 1963.

DISTRIBUTION: Macquarie and Campbell Is.

*Antarctopria latigaster campbellana* Yoshimoto, n. subsp.

♀: Body length 2.1-2.5 mm. Body and antennal club fuscous, except thorax sometimes reddish brown, antennal scape and segments 1-5 brownish, legs brownish yellow, and apical tarsal segment blackish. Head seen from dorsal view 1.3-1.5× as broad as long. Antenna similar to *A. latigaster*. Mesothorax narrow as seen from dorsal view (2.0 : 3.0), surface with scattered minute punctation. Propodeum with large punctation, narrower than long (1.5 : 2.0). Sparse whitish pubescence covering entire body. Petiole longer than wide (2.0 : 1.0).

SPECIMENS EXAMINED: Holotype ♀ (D.S.I.R., Nelson), Beeman Camp, sedge, 3. VIII. 1962. Paratypes: 6 ♀♀, same data as type; 1 ♀, Beeman Camp, sedge, 27. VII. 1962, Rennell, 2 ♀♀, Venus Cove, tussock, 2. II. 1963, Rennell; 5 ♀♀, Tucker Cove, 0-100 m, sedge, 7. VIII.

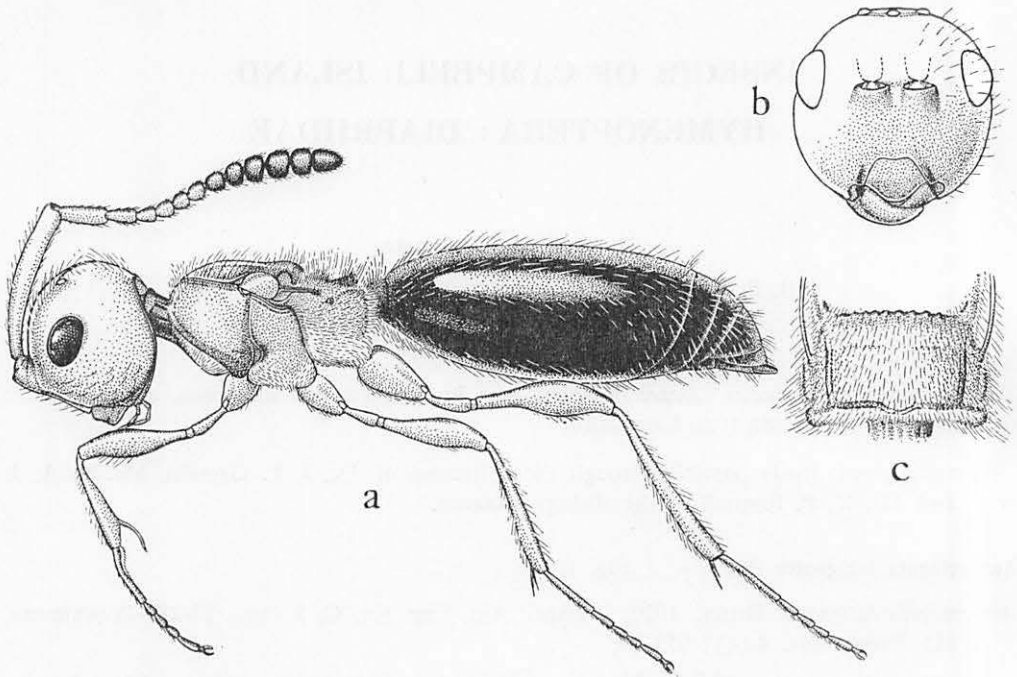


Fig. 1. *Antarctopria latigaster* Brues ♀. a, profile of body; b, frontal view of head; c, propodeum.

1962, Rennell, Gressitt; 1 ♀, Shoal Pt., 0–10 m, Tussock, 29.VII.1962.

♂: Body length 2.1–2.5 m. Similar to ♀ except as follows: Head slightly narrower than ♀. Antenna moniliform, similar to ♂ *A. latigaster*.

SPECIMENS EXAMINED: 7 ♂♂, 15 ♀♀, Beeman Camp, 50 m, sedge, 27.VII.1962, 3.VIII.1962, Rennell; 3 ♂♂, Shoal Pt., 0–10 m, Tussock, 29.VII.1962; 1 ♂, Venus Cove, Tussock, 2.II.1963, Rennell; 1 ♂, Northwest Bay, 5 m, Tussock, 30.XII.1962, Rennell.

DISTRIBUTION: Campbell I.

*Antarctopria latigaster campbellana* differs from *A. latigaster* by having the surface partially smooth with punctation and sparse fine hairs, and genitalia without spines at apex of cuspis. Also, both sexes of *A. campbellana* are fuscous and wingless; however, the ♂ and ♀ of *A. latigaster* are generally brownish yellow to dark brown and possesses a narrow, elongated rudimentary stock of the reduced forewing. I found that the ♀ possesses a much smaller sized reduced forewing (resembling a large spine) than that of the ♂ and I was in error (Pacific Insects 4: 973).