

# A New Species of the Genus *Chelocoris* from Vietnam (Hemiptera: Phymatidae: Carcinocorinae)

Nicholas A. Kormilev<sup>1</sup>

## ABSTRACT

The new phymatid, *Chelocoris vietnamensis*, n. sp., (Hemiptera: Carcinocorinae) is described and represents the 1st record of the genus from Vietnam. A diagnosis and figure of the pronotum and scutellum are provided to help distinguish this species from the closely related *C. spinosulus* from India.

## INTRODUCTION

Through the kind offices of Dr. Scott E. Miller, chairman of the Department of Entomology, Bishop Museum, Honolulu, Hawai'i, I had the privilege to study a small lot of Oriental Phymatidae, for which I express my sincere gratitude.

In this lot, comprising the subfamilies Macrocephalinae and Carcinocorinae, 1 specimen represents a new species of the genus *Chelocoris* Bianchi, 1899, which is described below.

The genus *Chelocoris* Bianchi is distributed in mountainous areas of northern Pakistan, Kashmir, northern India, Tibet, Nepal, Bhutan, southwest China, and now is known from Vietnam.

### ***Chelocoris vietnamensis* Kormilev, new species**

Fig. 1

**FEMALE.** Elongate ovate. Head, forelobe of pronotum, corium, femora, and tibiae with dense, spiculoid, setigerous granulations, and with a few longer spines. Lateral borders of pronotum, scutellum, and connexiva denticulate.

**Head.** Longer along median line than width across eyes (25:21); clypeus narrow, as long as antenniferous tubercles, with 1 long and 2 short spines; 3 spines between eyes, middle one longest; ocelli nearer to eyes than to hind border of head. Bucculae with 2 flaps. Antennas short, 1.26 × as long as width of head across eyes. Relative lengths and widths of antennal segments I-IV are 6(4):3(2):5(3):12.5(4.5). Relative lengths of labial segments I-III are 15:9:7.

**Thorax.** Pronotum shorter along median line than maximum width across lateral angles (40:65). Anterior border truncate; anterior angles with 2 (1+1) strong, setigerous spines; 2 (1+1) similar spines at middle of anterolateral borders; 2 (1+1) slightly smaller spines in front of median pit of forelobe, a few smaller spines on disk between spiculoid, setigerous granulations. Anterolateral borders slightly convex, denticulate; interlobal depression clearly visible. Hind disk with fine, dense punctures; anterolateral borders of hind lobe with a few spiculoid, setigerous granulations of different length; lateral angles cut out or truncate; posterolateral border rimmed, denticulate; hind border truncate; hind angles minute. Hind disk with 3 longitudinal depressions, 1 medially, 2 sublaterally. Carinae arising from hind border of forelobe, straight, divergent, reaching hind angles. Scutellum longer than basal width (32:22),

1. 5924 Gulfport Blvd., St. Petersburg, Florida 33707, USA.

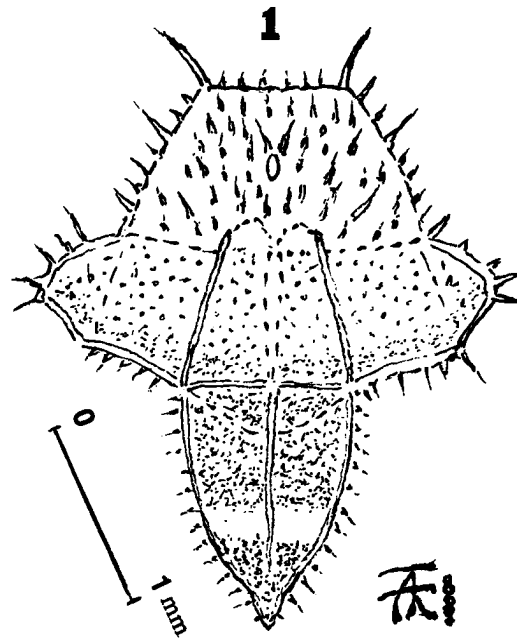


Fig. 1. *Chelocoris vietnamensis*, n.sp., ♀, dorsal aspect of pronotum and scutellum.

constricted before tip; lateral borders rimmed, denticulate; disk finely punctured; median carina thin, not reaching tip of scutellum. Hemelytra slightly longer than abdomen; corium reaching hind border of connexivum V; corium with setigerous granulation. Membrane with simple veins, not branched; one closed cell, formed by Cu + PCu, reaching almost to middle of membrane; another, formed by PCu + A, reaching tip of scutellum. *Pleurae*. Propleurae with spiculoid, setigerous granulations, fore border with spines of different sizes. Other pleurae with round granulations. *Legs*. Fore femora longer than their maximum width (38:12.5), covered with setigerous granulations. Fore tibiae with very fine setigerous granulations; middle and hind tibiae with erect setae.

*Abdomen*. Rhomboid, shorter than maximum width (80:85); anterolateral and posterolateral borders slightly convex; hind border rounded. Lateral borders with sparse, spiculoid, setigerous granulations. Venter with round granulations.

*Coloration*. Head pale yellow; pronotum yellow on fore lobe, orange on hind lobe, infuscate along hind border; scutellum brown with transverse, subapical, yellow band; corium whitish with orange veins, infuscate at tip; abdomen pale yellow, dark brown transverse bands across segments IV and V, except on posteroexterior portion of connexivum V; ventral side yellow to orange, lateral angles of abdomen dark brown; legs yellow to orange.

**Measurements.** Total length 6.10 mm; width of pronotum 2.60 mm; width of abdomen 3.40 mm.

**Type data.** Holotype ♀, VIETNAM: 39 km S of Djiring, 810 m, 29.IV.1960, L. W. Quate (BPBM 14,568). Deposited in the Bishop Museum, Honolulu, Hawai'i.

**Remarks.** *Chelocoris vietnamensis*, n. sp., is related to *C. spinosulus* Kormilev (1962) from Almora, northwest India, but the head and fore lobe of pronotum are much more densely covered with spiculoid, setigerous granulations; the scutellum is constricted before apex; and

the lateral borders of scutellum and abdomen are denticulate (only finely and densely serrate on *C. spinosulus*).

#### REFERENCES

- Distant, W. L.** 1909. LXV Oriental Rhynchota, Heteroptera, Phymatidae. Ann. Mag. Nat. Hist., ser. 8, 3:491-507.
- Handlirsch, A.** 1897. Monographie der Phymatiden. Ann. Naturh. Hofmus., Wien 12:127-230.
- Kormilev, N. A.** 1962. Notes on Phymatidae in the British Museum (Nat. Hist.) (Hemiptera: Heteroptera). Ann. Mag. Nat. Hist., ser. 13, 5:349-67.